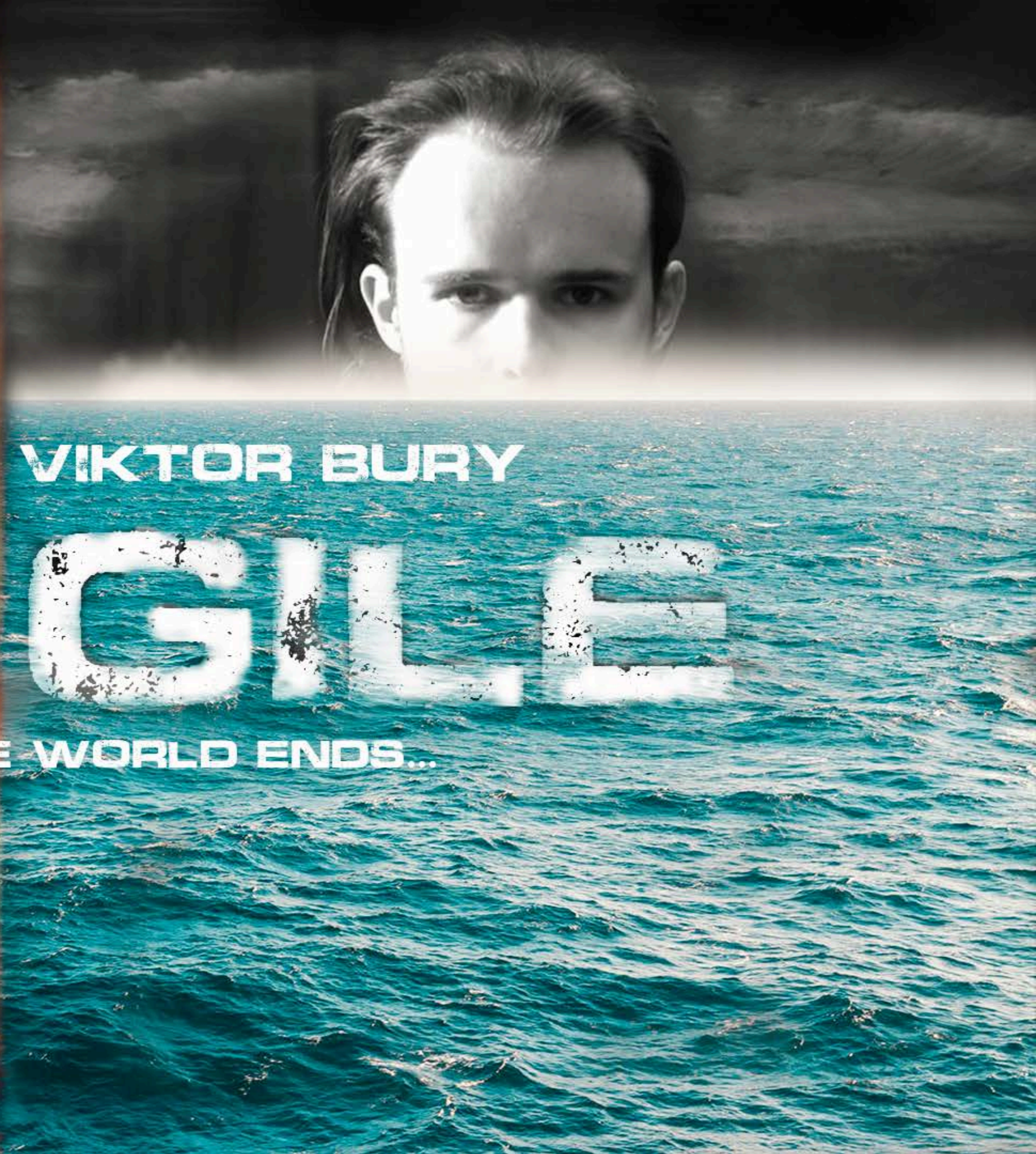




A FILM BY

FERA

WHEN THE WORLD ENDS...



VIKTOR BURY

GILLE



SCRIPT SYNOPSIS

Fragile is a gripping political and economic thriller that unravels the life of Alex Chen, a brilliant but tragic economist whose radical theories and unchecked ambition push a small coastal town to the brink of economic disaster and inadvertently trigger a global financial crisis.

The film opens with a high stakes auction of historical war bonds, showcasing Chen's brilliance and love of wealth.

From there, the story begins to unravel a brilliant plan crafted by Alex Chen. The plan aims to bolster the economy of a struggling coastal town by pumping in money at extremely fast rates. This plan, however, is uncovered during hearings for a smaller financial scuffle.



SCRIPT SYNOPSIS

What follows next is a gripping political ride of Alex Chen's journey through court. He and his lawyer, Mr. Whitman, must battle for victory in a case that appears to be based on nothing, a ruse bolstered by the press, by an ambitious journalist, Grace Jackson. When the case reaches the US Supreme Court, things start getting out of hand. The nation's economy crashes by 80%, leading to a recession on the scale of the Great Depression.

The third act moves away from Chen's case, and on to more global problems. As a split ripples across the US, caused in part by division around Chen, the approach of WWII looms ever closer. At the climax, Alex is forced to make a fatal decision: was the global recession, the impending nuclear war, actually caused by him? Or was it merely a series of inevitable systemic events?

SCRIPT SYNOPSIS



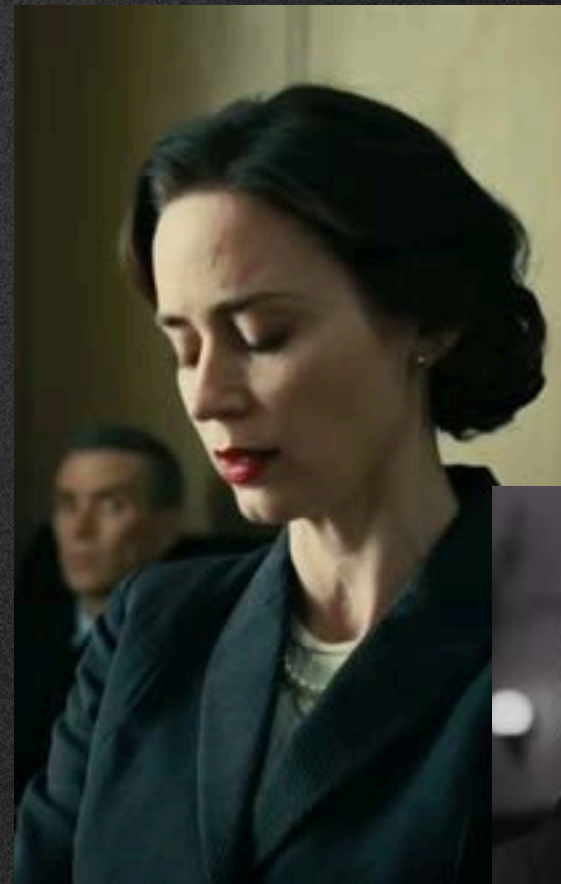
An alert is issued by FEMA, the US is under nuclear attack. As Alex Chen sits on the beach, nuclear missiles descend around him. This is it, the end. No one wins nuclear war. Alex has one last chance to look at himself, his actions. He has one last chance to look at society. As the bright light of the explosion illuminates his face, Alex Chen's eyes briefly dart to the camera, connecting with the audience.

MOODBOARD

- Intense
- Suspenseful
- Emotional
- Dramatic
- Mysterious
- Thought-provoking
- Humor to lighten mood

Cinematic Style:

The visual style of *Fragile* is meant to be extremely realistic. The goal is to create the most immersive experience possible, putting the audience inside the film. As a result, the cinematography is not meant to be forcefully perfect or aesthetically pleasing, it's meant to be real.



KEY CHARACTERS



ALEX CHEN

Protagonist. Brilliant, charismatic, wealthy...ambitious. Struggles with internal conflict throughout the film as the consequences of his theories begin to unfold.



Nathan Rivera

A fisherman, as well as colleague and friend of Alex Chen. He is haunted by the rapid disappearance of the fishing industry and the loss of his livelihood. He wants to help his town at all costs, but Alex may have something else in store.

Grace Jackson

A journalist, bent on exposing Alex Chen at all costs. Grace has a strong sense of justice, which drives her to dig deeper into stories that others might shy away from.



Lily Harper

A bartender who struggles to make a living. She has many aspirations, aspirations of the American dream. When she meets Alex, these ambitions begin to be realized, but not in the way she envisioned. Though Alex betrays her, she is a rock of hope in his bleak and miserable life. She's ethical and devoted.



KEY CHARACTERS

Mr. Whitman

Alex Chen's defense attorney. Smart, perseverant, with a subtle sense of humor. He's willing to go all in for Alex, but becomes annoyed when Alex makes a series of blunders, potentially costing him the case.



KEY CHARACTERS

THE CHOICE OF NON - LINEAR



Fragile uses black and white sequences for flashbacks, and color sequences for present time. Though the use of black and white and color is inspired by some of Christopher Nolan's work, the non-linear fashion of storytelling is essential in this particular film to keep the plot moving, suspenseful, and the audience on the edge of their seat throughout the entirety of the film.

SETTING / LOCATION



- Cold open at the Royal Auction House, immediately setting the stakes and mood of the film, while giving a glimpse into the Protagonist, Alex Chen.
- A Bustling Colonial Party showcasing the community of the coastal town, while subtly showing its initial economic downturn.
- Mr. Whitman and Alex Chen argue on a ferry, tensions building rapidly. Alex has gone behind Whitman's back, using illegal means to hide his mistakes, potentially costing Whitman the case.
- An intense argument between the twelve Supreme Court Justices, who disagree on whether the case against Chen holds any bearing.
- A high stakes chase sequence through the Ocean Town, as Grace Jackson comes to her wits end. She is bent on serving justice against Chen, no matter what it takes.

KEY SCENES

- A Musical Que set in the Forties Restaurant, a beautiful place of nostalgia appearing periodically during the film. The scene provides themes of hope and community, as Nuclear War approaches.
- The Final Scene on the beach, where Alex must confront everything.



TARGET AUDIENCE

The Film targets viewers both young and old. Those who enjoy thought provoking, intense, and emotional stories. People who are economically inclined, politically engaged, or those that simply want a memorable experience at the cinema. *Fragile's* ultimate goal is to provide entertainment, to provide an experience. The screenplay has been crafted with that thought at the forefront.



MARKET ANALYSIS

Fragile has the potential to reach over 70 million people in the US alone, given the size of audience's for political thrillers, dramas, and those economically engaged.

When the film is marketed around WWII, nuclear war, and the end of our planet and society, the target audience has the potential to increase drastically, as it creates a deep and personal connection to viewers worldwide.

Films showcasing similar themes and genres grossed very high, including: *Oppenheimer* - \$958 million, *the Big Short* - \$133 million, and *WarGames* - \$124.6 million



THANK YOU

Your time and dedication is very much appreciated! Links can be found below to our socials and the Proof of Concept Trailer for *Fragile*.

IG: [instagram.com/fragilethefilm](https://www.instagram.com/fragilethefilm)

FB: [facebook.com/experiencefragile](https://www.facebook.com/experiencefragile)

X (Twitter): [x.com/fragilethefilm](https://twitter.com/fragilethefilm)

YouTube: [youtube.com/fragilethefilm](https://www.youtube.com/fragilethefilm)

Proof of Concept Trailer: https://www.youtube.com/watch?v=F_k4rpDqY2M&t=59s